

Tehniskā uzdevuma "Gaisa kondicionieru
piegāde un uzstādīšana tehnoloģiskajās
telpās" pielikums

Fotofiksācija un telpu plāni
Objekts: Serveru telpa, 239.kab. (Goqola iela 3, Rīga)





Objekts: Releju telpa, 102.kab. (st.Škirotava, uzkalns)



Made in UK

↑

Non-submersible

WARNING

CE

S/N: PE 00027135

Max water temp 25°C

Auto sensing

120/240V 50/60HZ

15W max IP20

Item 3001911

Condensate Pump

PANTHER

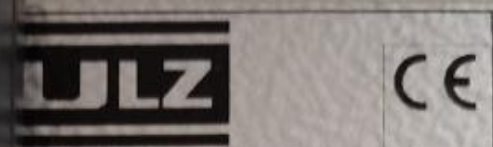
www.edcpumps.com

Pangbourne, RG8 7AN

EDC International Ltd

edc

etikett entfernen, wenn die Anlage
installiert ist.



CLIMA D'ARIA - AIR CONDITIONER
CLIMA D'ARIA - CONDITIONNEUR

MODELLO - MODELE SSIA5FRS2Z0000 7035
SERIE N° 0000482328
R - COMMANDER 2140002246
DATE 02/04/14

tensione - 400/3N/50-60 V
 corrente - 5,1/3 A
 potenza - 0,46 kW (L27L35RH40%)
 carica gas - Charge de gaz - kg
 tipo refrigerante - Refrigerant type
 protezione - Protective system side
 protezione - Protection du
 IP 54/34
 peso - 76 kg
 temperatura massima di conservazione - Max
 storage temperature (°C) - 60 °C
 temperatura massima refrigerante - Max
 refrigerant temperature (°C) - 85 °C
 temperatura minima refrigerante - Min
 refrigerant temperature (°C) - -10 °C
 pressione massima ammessa HP - Max
 allowable pressure (bar) - bar
 pressione massima ammessa LP - Max
 allowable pressure (bar) - bar
 classe energetica - Energy efficiency class - A

contiene HFC - Containing HFC - Das Gerät enthält wie vom I -
Dispositif contenant des fluides HFC à effet de serre disciplinés par le protocole de Kyoto

MADE IN ITALY

7915167



STULZ**CONDIZIONATORE D'ARIA - AIR CONDITIONER
KUHLAGGREGAT - CONDITIONNEUR**

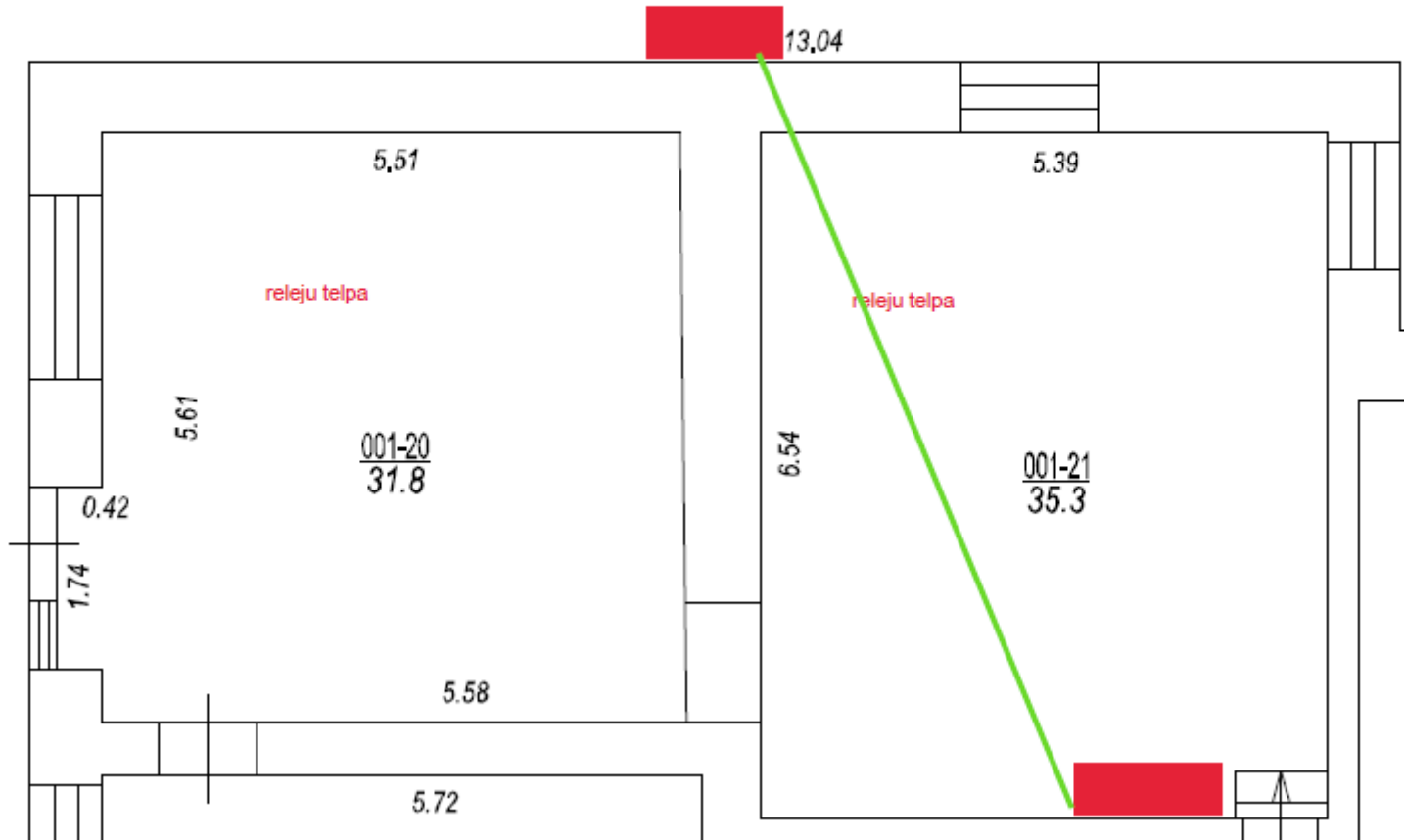
MODELLO - MODEL - TYP - MODELE SAOA20RS42C002 7035
 SERIE - SERIES - SERIE - SERIE N°0000482324
 ORDINE - ORDER - ORDER - COMMANDER 2140002249
 DATA - DATE - DATUM - DATE 02/04/14

Tensione nominale - Rated voltage - Nennspannung - Tension nominale	400/3N/50 V
Avviamento/marcia - Starting/run current - Anlaufstrom/Nennstrom - Démarrage/marche	50/8,6 A
Potenza Assorbita - Input power - Leistungsaufnahme - Puissance absorbée	3,93 kW (L27L35RH40%)
Carica gas - Filling capacity - Fullmenge - Charge de gaz	6,6 kg
Refrigerante tipo - Refrigerant type - Kaltemittel - Refrigerant type	R407C
Protezione lato armadio/ambiente - Protective system side cabinet/ambient - Schutzart schrankseite/raumseite - Protection du circuit interieur/exterieur	IP 54/34
Peso - Weight - Gewicht - Poids	140 kg
TSS (Max temp. Di stoccaggio - Max Storage temp - Max Lagertemperatur - Temp. Max d'emmagasinaqe)	50 °C
TS MAX (Refrigerante - Refrigerant - Kaltemittel - Refrigerant)	85 °C
TS MIN (Refrigerante - Refrigerant - Kaltemittel - Refrigerant)	-10 °C
PS HP (Max pressione ammissibile HP - Max allowable pressure HP - Max zulässiger Druck HP - Pression maximum admise HP)	29,5 bar
PS LP (Max pressione ammissibile LP - Max allowable pressure LP - Max zulässiger Druck LP - Pression maximum admise LP)	20 bar
CAT PED Modulo valutazione - Evaluation Module - Bewertungsverfahren - Procédure d'évaluation	I A

Contiene gas fluorurati ad effetto serra disciplinati dal protocollo di Kyoto - Device
 containing HFC fluids causing greenhouse effect regulated by Kyoto protocol - Das Gerät
 erhält wie vom Kyoto-Protokoll geregelte Fluorkohlenwasserstoffe Treibhausgasen -
 Dispositif contenant fluides HFC a effet de serre disciplinés par le protocole de Kyoto

MADE IN ITALY

- vecas kondicionieris
- esošā savienošā trase + drenāža



Objekts: Releju un sakaru telpa (st.Istalsna)





SPLIT ROOM AIR CONDITIONER
 CONDIZIONATORI D'ARIA DOMESTICI
 APARATO AIRE ACONDICIONADO SPLIT
 CLIMATISEUR SPLIT MURAL
 SPLIT-RAUMKLIMAGERÄT

MODELLO **S24AHP N52D**
 MODELO **(ASNH2465DM2)**
 MODELE
 MODELLE
 MODELL

PHASE FREQUENCY VOLTAGE
 FASE TENSIONE VOLTAGGIO
 FASE 1st FRECUENCIA 50 Hz VOLTAJE 220-240 V~
 PHASE FREQUENCY TENSION
 PHASE FREQUENZ SPANNUNG

	COOLING RAFFREDDAMENTO REFRIGERACION REFROIDISSEMENT KÜHLEN	HEATING RISCALDAMENTO CALEFACCION CHAUFFAGE HEIZEN
CAPACITY CAPACITA CAPACIDAD PUISSANCE KÜHL/HEIZLEISTUNG	6 390 W 5 490 kcal/h 21 800 Btu/h	6 830 W 5 870 kcal/h 23 300 Btu/h

NORMAL (normal, normal, normal, normale)

INPUT
 POTENZA ASSORBITA
 CONSUMO
 PUISSANCE ABSORBEE
 LEISTUNGS-AUFNAHME
 CURRENT
 CORRENTE ASSORBITA
 CORRIENTE
 COURANT
 STROMAUFNAHME

	2 390 W	2 450 W
	10.5 A	10.5 A

MAX (max, max, max, massimo)

INPUT
 POTENZA ASSORBITA
 CONSUMO
 PUISSANCE ABSORBEE
 LEISTUNGS-AUFNAHME
 CURRENT
 CORRENTE ASSORBITA
 CORRIENTE
 COURANT
 STROMAUFNAHME

	2 900 W	2 700 W
	12.7 A	11.8 A

MAX. H.E. PRESSURE
 MAX. H.E. PRESSIONE
 MAX. H.E. PRESSION
 MAX. H.E. PRESSION
 MASSIMO H.E. DRUCK

5 000 kPa

REFRIGERANT
 REFRIGERANTE
 REFRIGERANTE
 REFRIGERANT
 KALTEMITTEL

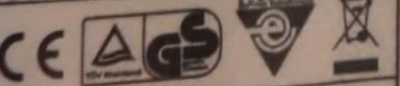
R410A 1.6 kg

CLIMATE CLASS
 CLASSE CLIMA
 CLASIFICACION
 CLASSE CLIMAT
 KLIMAKLASSE

T1

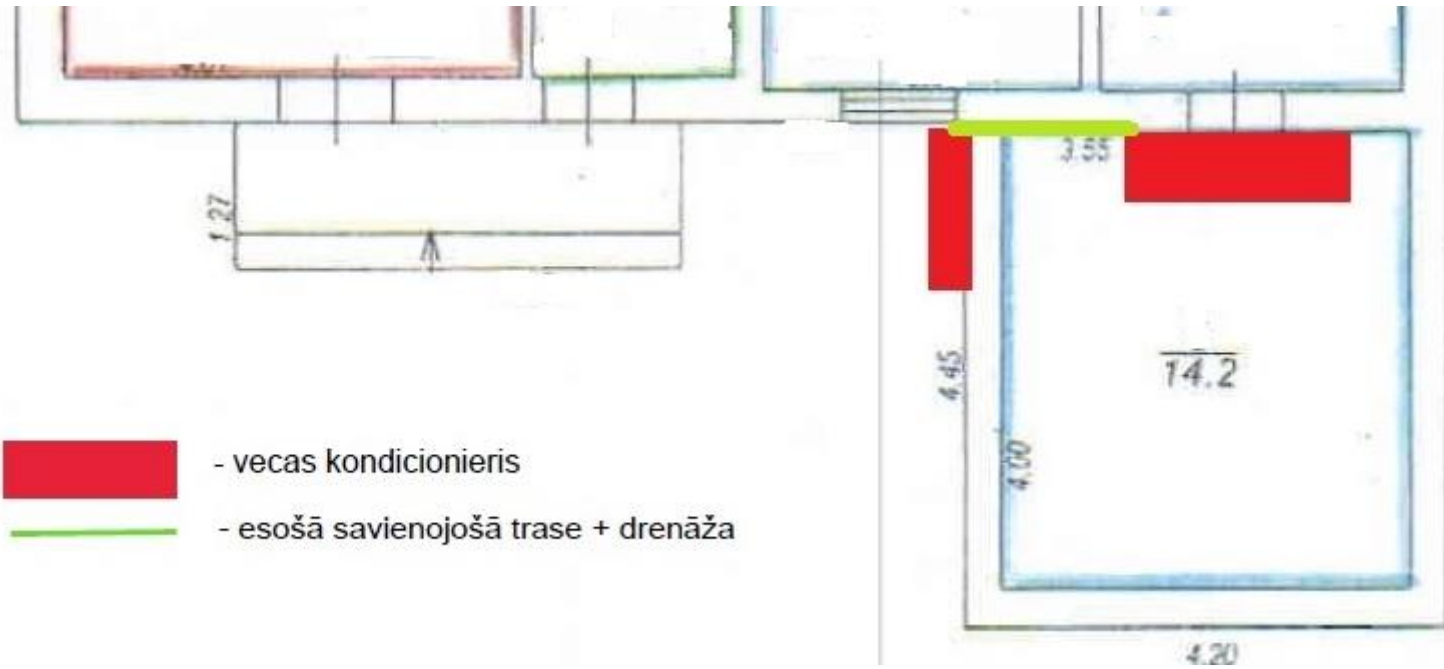
MADE IN KOREA
 PRODOTTO IN COREA
 FABRICADO EN COREA
 FABRIQUE EN COREE
 MADE IN KOREA



SPLASH PROOF IPX4 (OUTDOOR ONLY)
 GRADO DI PROTEZIONE IPX4 (SOLO UNITA ESTERNA)
 PROTECCION CONTRA GOTED IPX4
 (SOLO UNIDAD EXTERIOR)
 ETANCHEITE IPX4 (UNITE EXTERIEURE SEULEMENT)
 SPLASH PROOF IPX4 (NUR AUSGERÄT)



P/N: MEZ37451-006

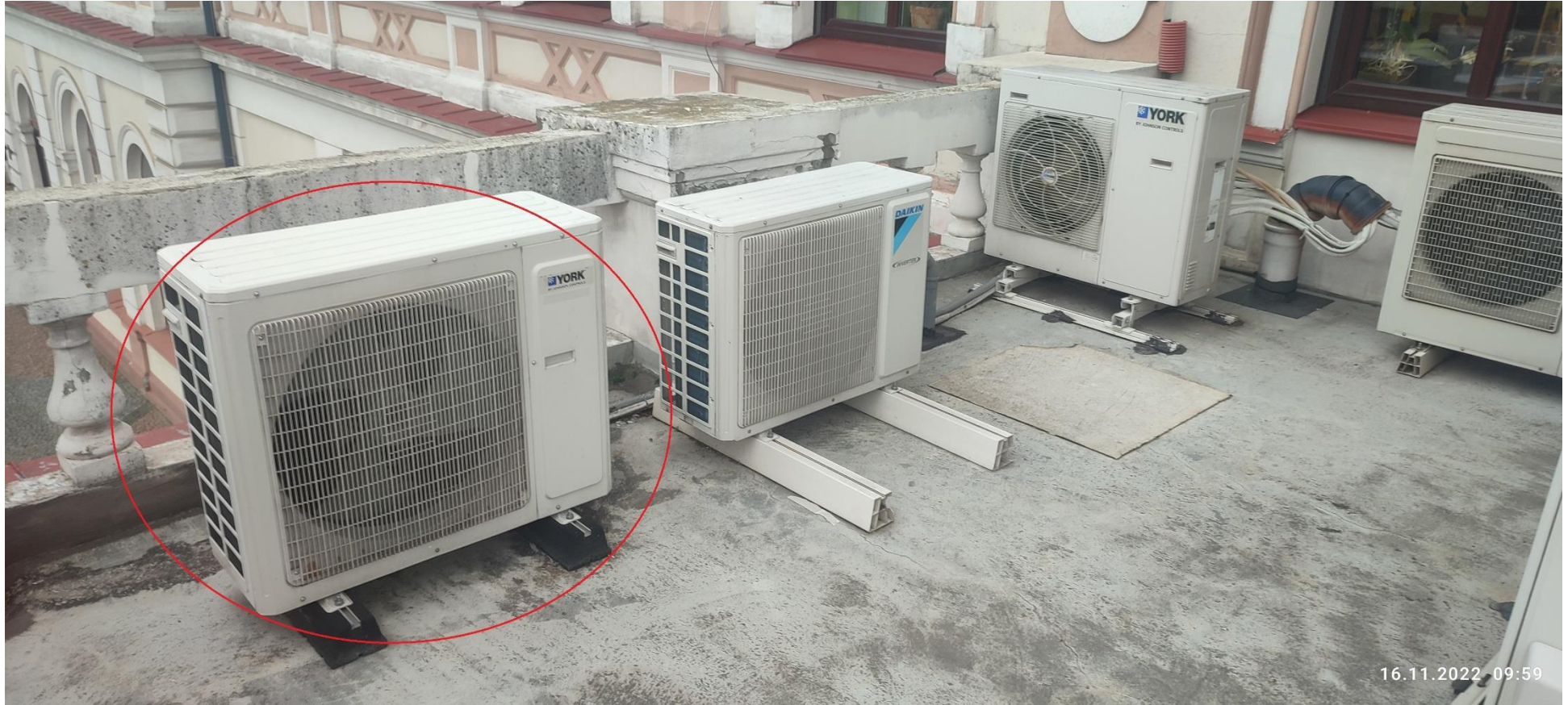




-  - vecas kondicionieris
-  - esošā savienošā trase + drenāža

Objekts: KVU telpa stacijā Liepāja





**SPLIT AIR CONDITIONER
INDOOR UNIT**
Model **YWHJXH024BAR1-FX**

Rated Voltage **220-240V~**
 Rated Frequency **50/60Hz**
 Cooling Capacity **7000W**
 Heating Capacity **7300W**
 Air Flow Volume **1200m³/h**
 Sound Pressure Level(H) **50dB(A)**
 Weight **17kg**
 Manufactured Date **2015.05**

YORK
BY JOHNSON CONTROLS

CE  
63229961739

1503-37640

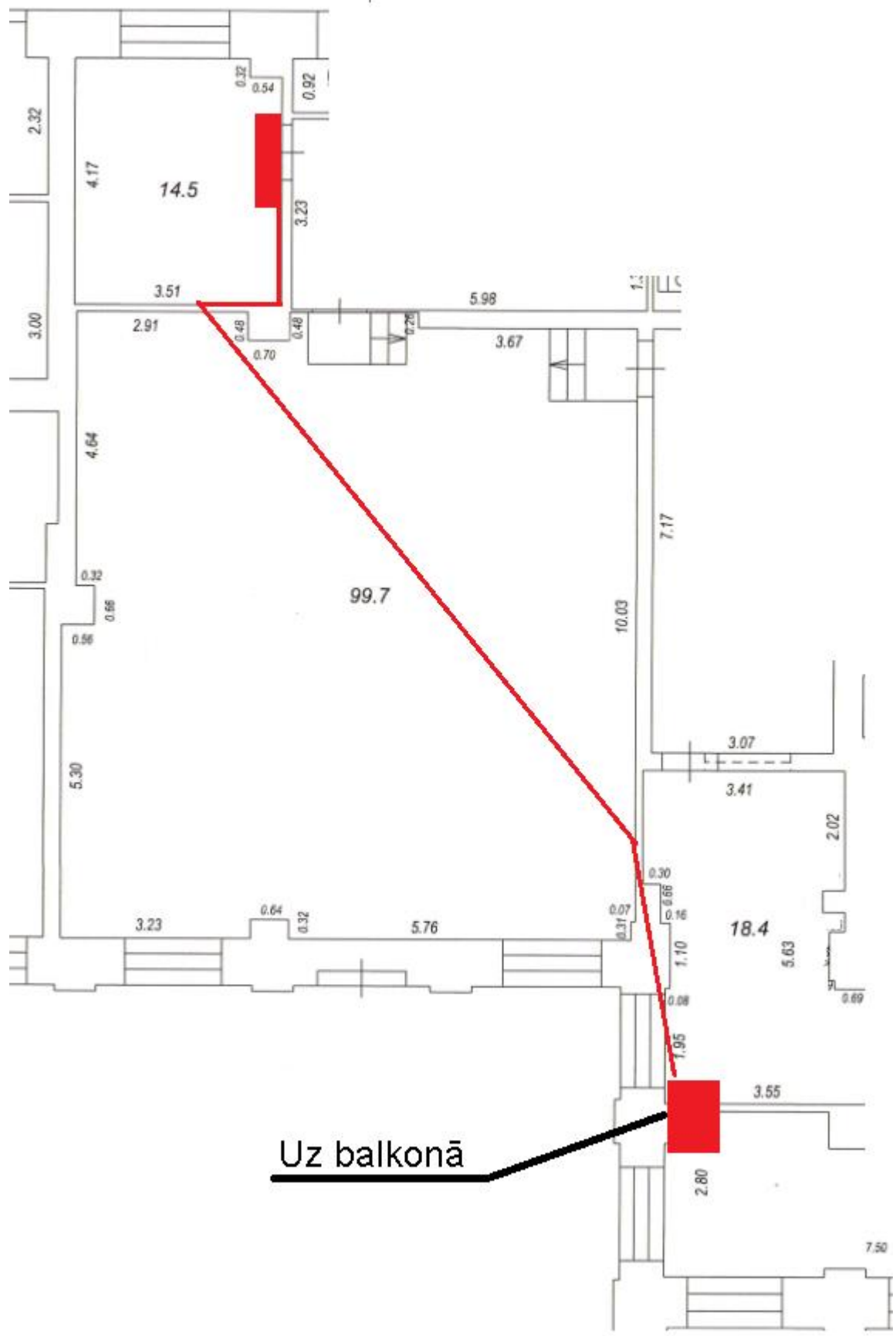
1503-37640

YORK AIR CONDITIONER OUTDOOR UNIT
BY JOHNSON CONTROLS

Model		YWHJYH024BAR1AKX	
Rated Voltage	220-240V~	Cooling Capacity	7000W
Rated Frequency	50/60Hz	Heating Capacity	7300W
Climate Type	T1	Cooling Power Input	2000W
Weight	65kg	Heating Power Input	1960W
Isolation	I	Cooling Rated Input	3200W
Refrigerant	R410A	Heating Rated Input	3200W
Refri. Charge	2.3kg		
Sound Pressure Level			58dB(A)
Maximum Allowable Pressure			4.3MPa
Operating Pressure (Discharge Side/Suction Side)			4.3/2.5MPa
Manufactured Date	2015.05	Moisture Protection	IP24

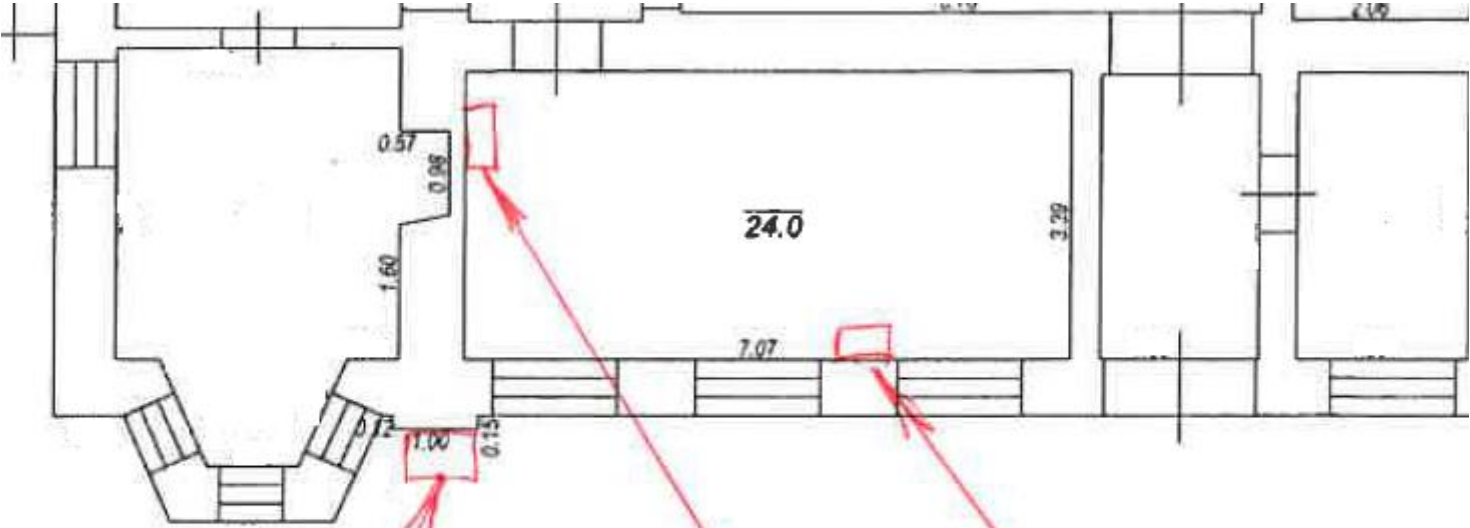
Contains fluorinated greenhouse gases covered by the Kyoto Protocol

CE  
63229961740



Uz balkonā

Objekts: Releju un sakaru telpa (st.Bene)

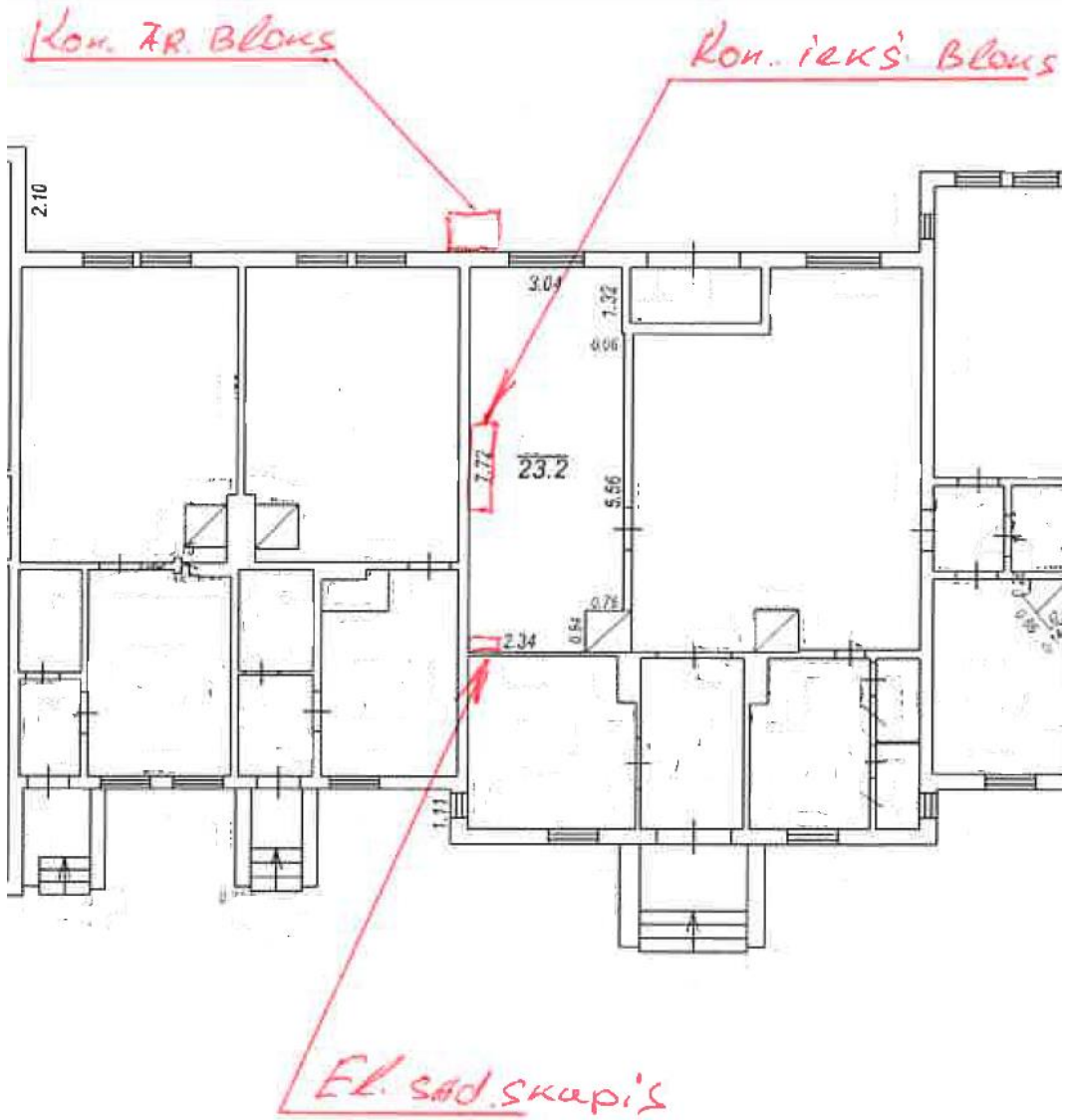


Kond. tip. 6L.

Fl. sod. sk.

Kond. ienu 6Lans

Objekts: Releju un sakaru telpa (st. Renģe)



Objekts: Sakaru telpa (st.Vecumnieki)

Kond. ĀR. blons

Kond. iks¹ blons
El. sad. sk.

