

Tehniskā uzdevuma "Gaisa kondicionieru
piegāde un uzstādīšana tehnoloģiskajās
telpās" pielikums

Fotofiksācija un telpu plāni
Objekts: Serveru telpa, 239.kab. (Goqola iela 3, Rīga)





Objekts: Releju telpa, 102.kab. (st.Škirotava, uzkalns)





STULZ**CONDIZIONATORE D'ARIA - AIR CONDITIONER
KUHLAGGREGAT - CONDITIONNEUR**

MODELLO - MODEL - TYP - MODELE SAOA20RS42C002 7035
SERIE - SERIES - SERIE - SERIE N°0000482324
ORDINE - ORDER - ORDER - COMMANDER 2140002249
DATA - DATE - DATUM - DATE 02/04/14

Tensione nominale - Rated voltage - Nennspannung - Tension nominale	400/3N/50 V
Avviamento/marcia - Starting/run current - Anlaufstrom/Nennstrom - Démarrage/marche	50/8,6 A
Potenza Assorbita - Input power - Leistungsaufnahme - Puissance absorbée	3,93 kW (L27L35RH40%)
Carica gas - Filling capacity - Fullmenge - Charge de gaz	6,6 kg
Refrigerante tipo - Refrigerant type - Kaltemittel - Refrigerant type	R407C
Protezione lato armadio/ambiente - Protective system side cabinet/ambient - Schutzart schrankseite/raumseite - Protection du circuit interieur/exterieur	IP 54/34
Peso - Weight - Gewicht - Poids	140 kg
TSS (Max temp. Di stoccaggio - Max Storage temp - Max Lagertemperatur - Temp. Max d'emmagasinaqe)	50 °C
TS MAX (Refrigerante - Refrigerant - Kaltemittel - Refrigerant)	85 °C
TS MIN (Refrigerante - Refrigerant - Kaltemittel - Refrigerant)	-10 °C
PS HP (Max pressione ammissibile HP - Max allowable pressure HP - Max zulässiger Druck HP - Pression maximum admise HP)	29,5 bar
PS LP (Max pressione ammissibile LP - Max allowable pressure LP - Max zulässiger Druck LP - Pression maximum admise LP)	20 bar
CAT PED Modulo valutazione - Evaluation Module - Bewertungsverfahren - Procédure d'évaluation	I A

Contiene gas fluorurati ad effetto serra disciplinati dal protocollo di Kyoto - Device
containing HFC fluids causing greenhouse effect regulated by Kyoto protocol - Das Gerät
erhält wie vom Kyoto-Protokoll geregelte Fluorkohlenwasserstoffe Treibhausgasen -
Dispositif contenant fluides HFC a effet de serre disciplinés par le protocole de Kyoto

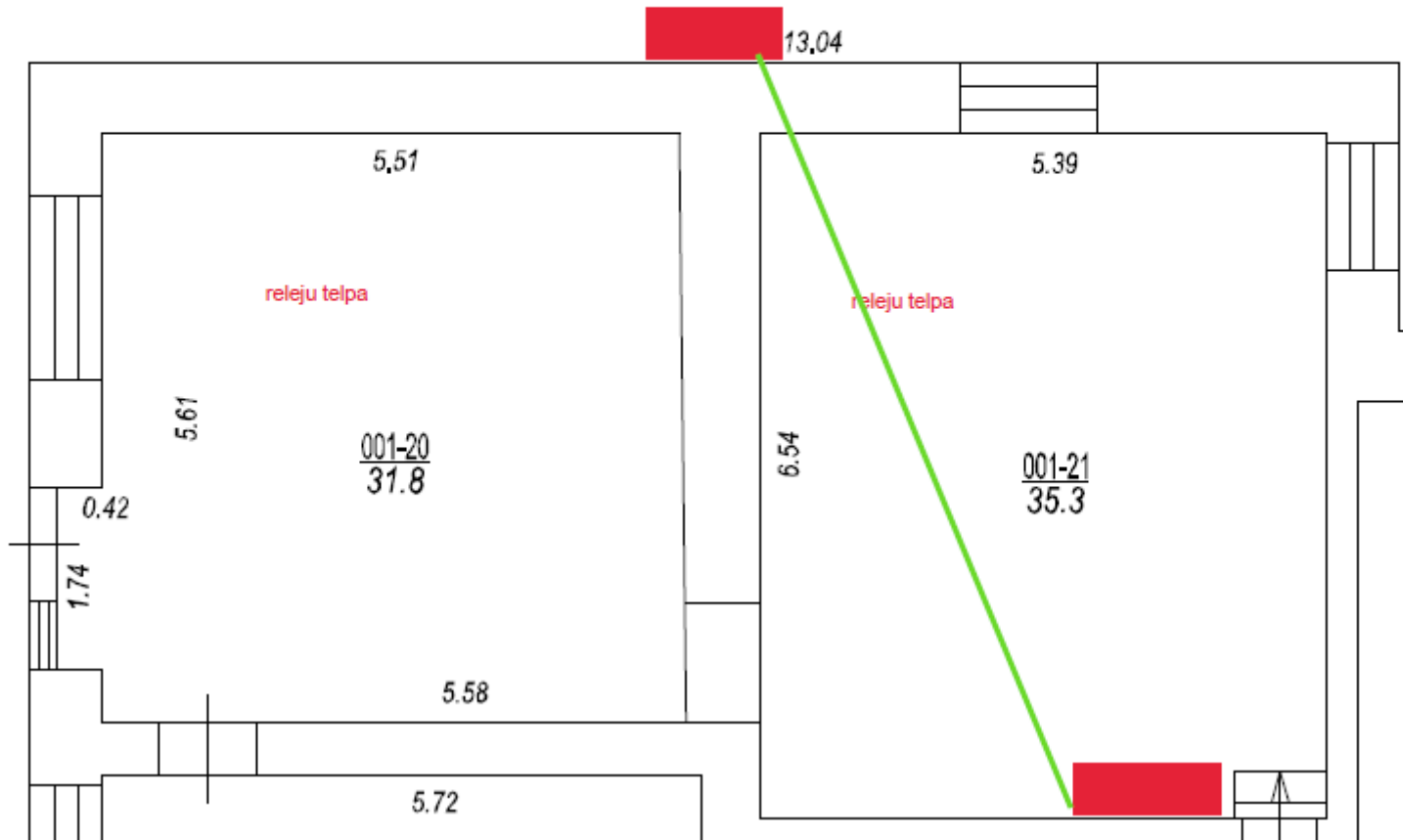
MADE IN ITALY



- vecas kondicionieris



- esošā savienošā trase + drenāža



Objekts: Releju un sakaru telpa (st.Istalsna)





SPLIT ROOM AIR CONDITIONER
 CONDIZIONATORI D'ARIA DOMESTICI
 APARATO AIRE ACONDICIONADO SPLIT
 CLIMATISEUR SPLIT MURAL
 SPLIT-RAUMKLIMAGERÄT

MODELLO **S24AHP N52D**
 MODELO **(ASNH2465DM2)**
 MODELE
 MODELLE
 MODELL

PHASE FREQUENCY VOLTAGE
 FASE TENSIONE VOLTAGGIO
 FASE 1st FRECUENCIA 50 Hz VOLTAJE 220-240 V~
 PHASE FREQUENCY TENSION
 PHASE FREQUENZ SPANNUNG

	COOLING RAFFREDDAMENTO REFRIGERACION REFROIDISSEMENT KÜHLEN	HEATING RISCALDAMENTO CALEFACCION CHAUFFAGE HEIZEN
CAPACITY CAPACITA CAPACIDAD PUISSANCE KÜHL/HEIZLEISTUNG	6 390 W 5 490 kcal/h 21 800 Btu/h	6 830 W 5 870 kcal/h 23 300 Btu/h

NORMAL (normal, normal, normal, normale)
 INPUT
 POTENZA ASSORBITA
 CONSUMO 2 390 W 2 450 W
 PUISSANCE ABSORBEE
 LEISTUNGS-AUFNAHME
 CURRENT
 CORRENTE ASSORBITA
 CORRIENTE 10.5 A 10.5 A
 COURANT
 STROM-AUFNAHME

MAX (max, max, max, massimo)
 INPUT
 POTENZA ASSORBITA
 CONSUMO 2 900 W 2 700 W
 PUISSANCE ABSORBEE
 LEISTUNGS-AUFNAHME
 CURRENT
 CORRENTE ASSORBITA
 CORRIENTE 12.7 A 11.8 A
 COURANT
 STROM-AUFNAHME

MAX. H.E. PRESSURE
 MAX. H.E. PRESSIONE 5 000 kPa
 MAX. H.E. PRESSION
 MAX. H.E. PRESSION
 MASSIMO H.E. DRUCK

REFRIGERANT
 REFRIGERANTE R410A 1.6 kg
 REFRIGERANTE
 REFRIGERANT
 KÄLTEMITTEL

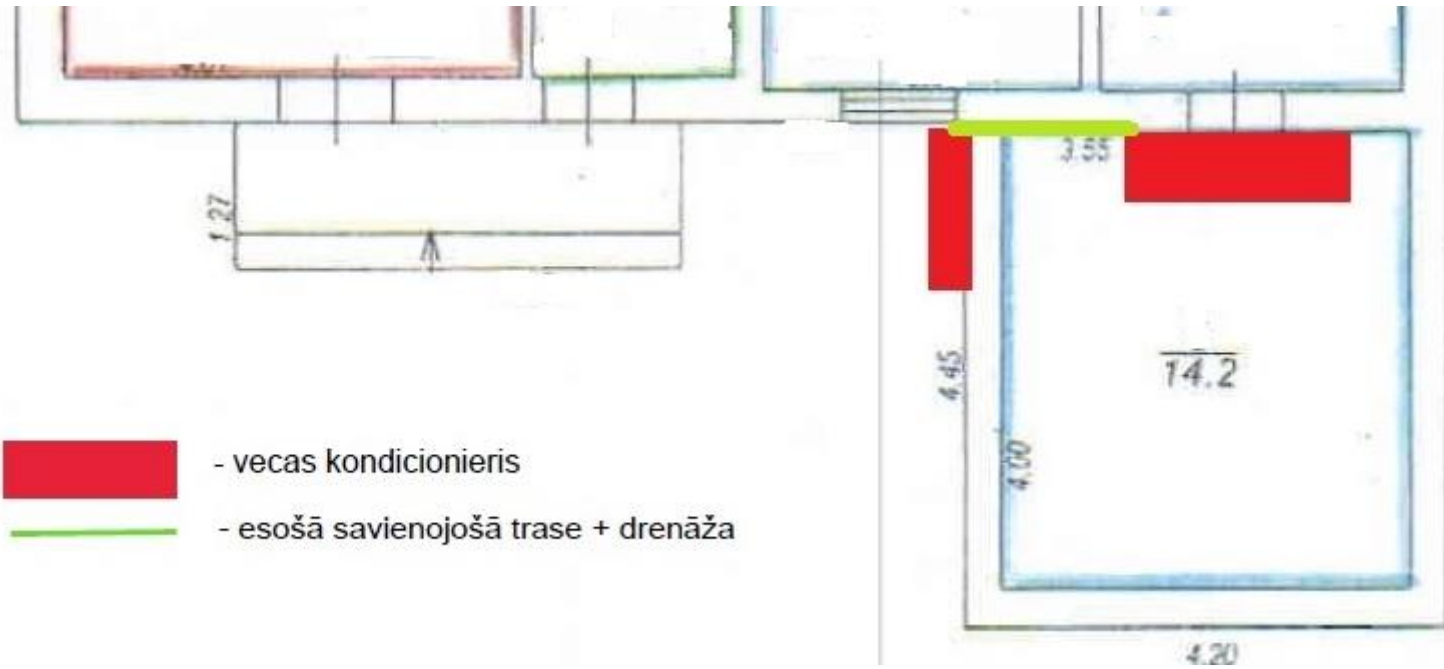
CLIMATE CLASS
 CLASSE CLIMA T1 MADE IN KOREA
 CLASIFICACION T1 PRODOTO IN COREA
 CLASSE CLIMAT FABRICADO EN COREA
 KLIMAKLASSE FABRIQUE EN COREE
 MADE IN KOREA

SPLASH PROOF IPX4 (OUTDOOR ONLY)
 GRADO DI PROTEZIONE IPX4 (SOLO UNITA ESTERNA)
 PROTECCION CONTRA GOTED IPX4
 (SOLO UNIDAD EXTERIOR)
 ETANCHEITE IPX4 (UNITE EXTERIEURE SEULEMENT)
 SPLASH PROOF IPX4 (NUR AUSGERÄT)

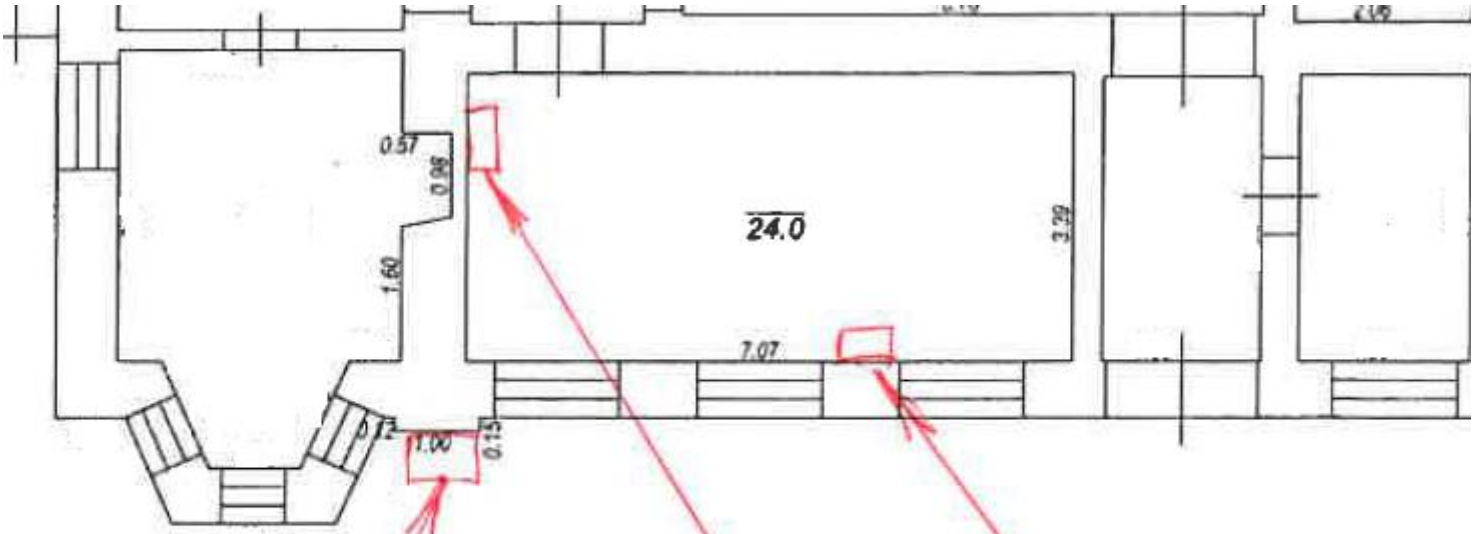


P/N: MEZ37451-006





Objekts: Releju un sakaru telpa (st.Bene)

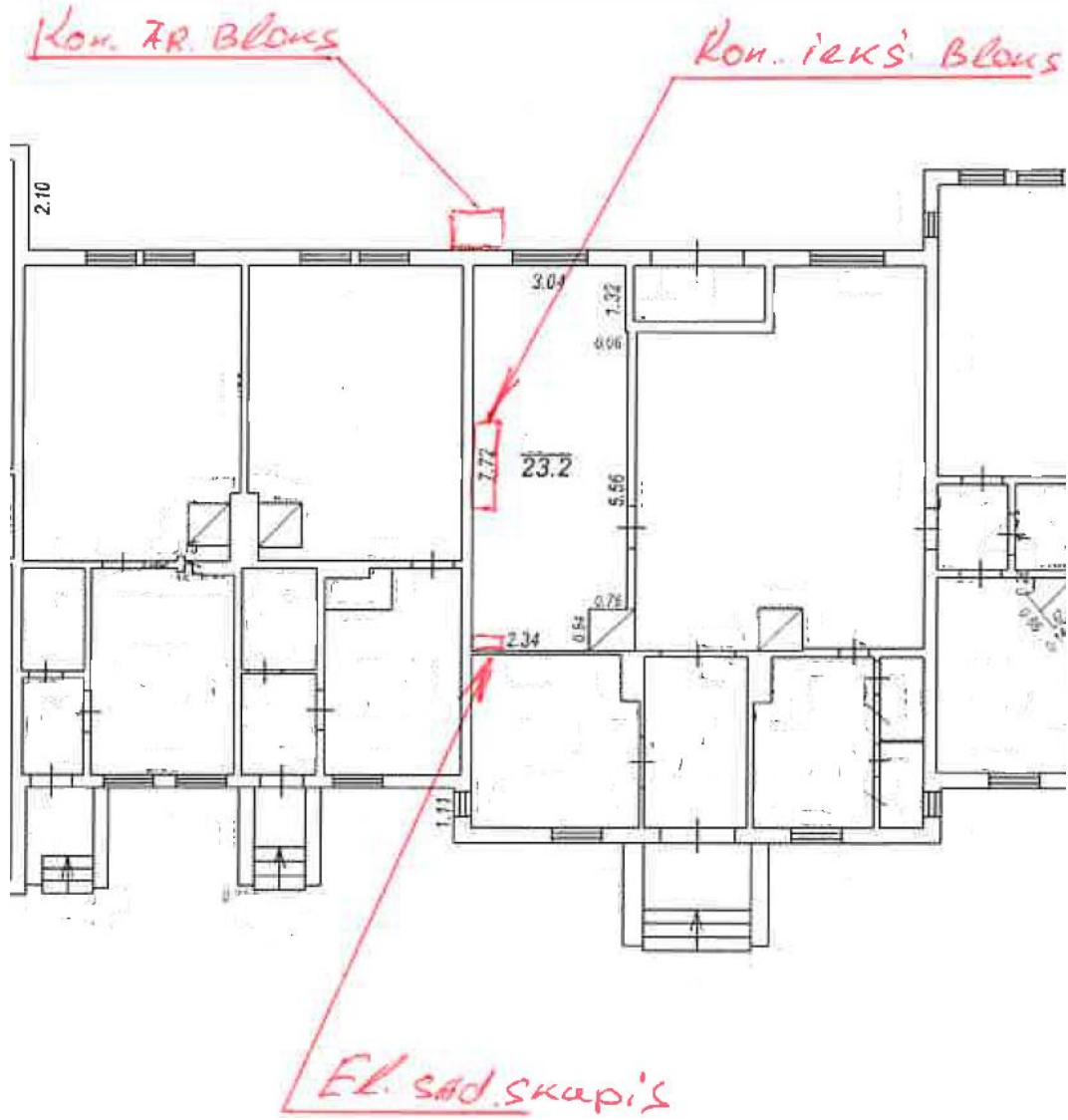


Kond. tip. 6L.

Fl. sod. sk.

Kond. ienu 6Lans

Objekts: Releju un sakaru telpa (st. Renģe)



Objekts: Sakaru telpa (st.Vecumnieki)

Kond. ĀR. blons

Kond. iks¹ blons
El. sad. sk.

